

MAY 29 & 30, 2021

ROTARY RIVERSIDE PARK

**PARK  
PLAY  
FESTIVAL**



A Co-Production

**POWERHOUSE THEATRE COLLABORATIVE &**

**COMMUNITY PLAYERS OF CONCORD, NH**

**MILL**  **SERIES**



**Bank of  
New Hampshire**

Presenting plays written by participants in  
the Powerhouse Theatre Collaborative  
2020 playwriting workshop.

With Thanks to our Season Sponsor

**SPECTACLE LIVE**

Managing the Colonial Theatre and bringing  
live entertainment to the Lakes Region.

Thank you to our Park Play  
Festival Sponsors!

**DOW REALTY GROUP**  
KELLER WILLIAMS  
LAKES & MOUNTAINS REALTY | COASTAL REALTY

**TS EVENT**  
PRODUCTIONS LLC





Play **AUTHOR**

---

Black Ice **CHUCK FRAY**

A Box of Chocolates **BETSEY COX**

Sunrise Towers **JOE ELCOCK**

Guilty as Charged **BRYAN HALPERIN**

The Save Button **TESS HODGES**

A Mother's Legacy **DORIS BALLARD**

A Parent **SHERRY GARDNER**

Light Speed Dating **NORA McBURNETT**

**Special thanks to the Winnepesaukee Yacht Club,  
Jim Rogato and the city of Laconia.**




**Please consider a  
donation today.**

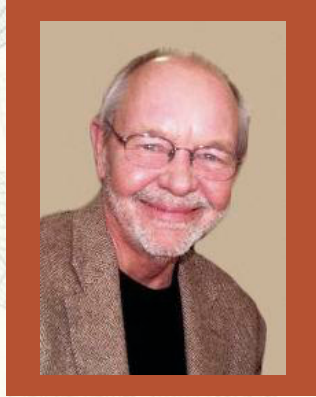


HELP US BRING LIVE THEATRE BACK TO NEW HAMPSHIRE

TAX DEDUCTIBLE



**The 2021 Inaugural season  
of Powerhouse Theatre  
Collaborative is dedicated  
to David H. Bownes.**



David was a long-time supporter of the Belknap Mill who believed in the social and economic power of theatre. His many years of hard work were instrumental in initiating and shepherding the renovation of the Colonial Theatre. David facilitated the partnership between the Colonial Theatre and the Belknap Mill. His passion for theatre and his acting skills are missed by many, and we produce this first season, which would not have happened without him, in David's honor.



## **ACT I**

### **Black Ice**

**Playwright - Chuck Fray**

**Director - Doreen Sheppard**

**Joe - Jim Gocha**

**Mike - Paul G Smith**

**Gem - Alyssa Johnson**

**Paulie - Kenny Aber**

### **A Box of Chocolates**

**Playwright - Betsey Cox**

**Director - Dorothy Piquado**

**Ethel - Karen Braz**

**Ruben - Forest Hamel**

### **Sunrise Towers**

**Playwright - Joe Elcock**

**Director - J Alward**

**Margaret - Nancy Rosen**

**Willie - Angelo Gentile**

**Barney - Jim Rogato**

### **Guilty as Charged**

**Playwright - Bryan Halperin**

**Director - Bryan Halperin**

**Bob - David Nelson**

**Rita - Nora McBurnett**

**Sam - Emily Judkins**





## **ACT II**

### **The Save Button**

**Playwright - Tess Hodges**

**Director - Lauren Shelby Douglas**

**Lex - Anna Jortikka**

**Sam - Paige DeGirolamo**

### **A Mother's Legacy**

**Playwright - Doris Ballard**

**Director - John Piquado**

**Rose - Patte Sarauskys**

**Marie - Katie Dunn**

### **A Parent**

**Playwright - Sherry Gardner**

**Director - Jim Rogato**

**Sarah - Rhonda Perry**

**Mira - Phoebe VanScoy-Giessler**

**Stan - Mason Donovan**

**Rita - Stacy Soucy**

### **Light Speed Dating**

**Playwright - Nora McBurnett**

**Director - Kathleen Hill**

**Libby - Tess Hodges**

**Evan - John Masse**

**Alex - Katie Griffiths**

**Cal - Kenny Aber**

**Jaime - Emily Judkins**

**Cara - Paige DeGirolamo**



## Park Festival Bios

**Kenny Aber (Paulie | *Black Ice*, Cal | *Light Speed Dating* )** is thrilled to be a part of the Park Play Festival! This is his second community theater production, after performing in the Zoom Play Festival earlier in the Spring. He is grateful to the talented and generous group of writers, directors, and actors who have made this such a fun and rewarding experience.

**Jessica "J" Alward (Director | *Sunrise Towers*)** has been directing local community theatre for over 25 years. Past work includes *Les Miserables*, *Jekyll & Hyde*, *Miracle Worker*, *A Few Good Men* and many more. J is a huge champion for locally grown community theatre with local talent both on stage and behind the curtain. When not doing theatre, she works for Public Health in the Bureau of Infectious Disease Control. "Wash your hands, wear a mask, stay 6 feet apart indoors and get your vaccine ASAP!"

**DOW**  
REALTY GROUP



*Local knowledge, State-wide focus,  
International exposure,  
Trusted relationships*

**kw** COASTAL AND  
LAKES & MOUNTAINS  
KELLERWILLIAMS REALTY  
Office: 603.569.4663

Direct: 866.525.3946  
AdamDow.com  
603Luxury.com

**Doris Ballard (Playwright | *A Mother's Legacy*)** is thrilled to be a part of this festival and has learned so much about playwriting and directing. She has performed locally for more than 40 years with groups such as Community Players of Concord and Seacoast Repertory Theatre. Favorite roles include Sister Hubert (*Nunsense*) and Puffer (*The Mystery of Edwin Drood*). Now retired with her husband, Norm in Hampton, NH, she has been following her passion of writing and producing comedy shows and workshops. Her true love is to continue to perform standup across NH where she is often joined as a duo by her hubby.

**Karen Braz (Ethel | *A Box of Chocolates*)** has been an actor for a number of years, from Chekhov's *The Three Sisters* as an Emerson College 1976 theatre major, to the Widow Corney in the 2014 ETC production of *Oliver!*. She is now primarily a director of youth theatre. She is co-founder, with Barb Woodman, and director of the Community Players of Concord, NH's Children's Theatre Project, celebrating its 25th season during the pandemic! She has directed and taught with the Kearsarge Arts Theatre (KAT) Company, assistant directed and stage managed with RB Productions, and is the theatre director for the Performance Ensemble Group (PEG) at Rundlett Middle School. Karen is very pleased to be involved with Betsey Cox's *A Box of Chocolates*.



An active community of friends is  
waiting for you at Taylor



*Start planning your next chapter today!*

**Taylor Community**  
435 Union Avenue  
Laconia, NH 03246

**Sugar Hill**  
83 Rolling Wood Drive  
Wolfeboro, NH 03894

**Back Bay**  
66 Taylor Drive  
Wolfeboro, NH 03894

 **Taylor**  
Community

 (603) 366-1400 / [taylorcommunity.org](http://taylorcommunity.org)

A not-for-profit 501 (c) (3) organization

## **Betsey Cox (Playwright | A Box of Chocolates)**

is a longtime amateur theatre devotee who has run the gamut of on and off stage experience from grip to director/producer and chorus to lead. A past nominee for Best Director and Best Set Design with the NHTA with the Community Players of Concord, she is now also working with the Nashua ActorSingers as well. This is her first formal experience with playwriting although she has written many skits and road shows in the past. Betsey thanks Bryan and Chuck for making this a great experience.

**The Park Play Festival is part of  
our Mill Series.**

**We thank our sponsor!**



# Making *More* Possible



**Bank of  
New Hampshire**  
Member FDIC

**PROUDLY SUPPORTING THE  
POWERHOUSE THEATRE  
COLLABORATIVE**

As your financial partner, we are committed to helping you make the impossible, possible.



BankNH.com  
1.800.832.0912



*Celebrating*  
**190**  
1831-2021 *Years*

**Paige DeGirolamo (Sam | *The Save Button*, Cara | *Light Speed Dating*)** is a Boston based actor. She most recently worked on zoom productions of *In Boxes* (Kate) and *String Can Theory* (Beth) and is thrilled to bring this piece to life with a whole new group of artists.

**Mason Donovan (Stan | *A Parent*)** is excited to start off his acting adventures with the festival! He has been a long-time supporter of community theatre and looks forward to being involved on stage. Much appreciation goes out to Powerhouse and CPC for providing such a valuable community forum.

**Katie Dunn (Marie | *A Mother's Legacy*)** has been involved in community theatre in a variety of facets in NH. She is beyond thrilled to be involved with Powerhouse Theatre Collaborative and both the "zoom and park experiences". It was a pleasure to work with old friends and make new ones. She is so happy to do live theatre again!

**Lauren Shelby Douglas (Director | *The Save Button*)** is excited to be stepping back into a director's role for the first time in over 10 years. She is an active member with The Community Players of Concord, having performed in multiple productions with them for the past 5 years. In addition to directing *The Save Button*, she is assistant directing *The Dinner Party* in August at the Colonial Theatre.

# SPECTACLE

# Live

Is a proud supporter of the  
**POWERHOUSE THEATRE COLLABORATIVE**

**Spectacle Management** is proud to manage the Colonial Theatre of Laconia, and would like to thank the City of Laconia and the Laconia Community for their support.

**For a complete list of all the performances** coming to the Colonial Theatre, please visit

[ColonialLaconia.com](http://ColonialLaconia.com)



**Connect with us online for more shows and info**



Colonial Theatre – Laconia



@coloniallaconia



@colonialtheatrelaconia

**1.800.657.8774 | SPECTACLELIVE.COM**

**Joe Elcock (Playwright | Sunrise Towers)** is a resident of Concord and a first time participant in community theatre. In his spare time he hikes with his coonhound. He thanks his director and cast for bringing his words to life!

**Sherry Gardner (Playwright | A Parent)** has been involved with theatre in NH for the past twelve years, primarily as a costume and prop designer for productions performed by young people. This is the first play she has written. She is extremely grateful to the director and cast for their input in clarifying and co-creating this version.



*Lakes Region*  
**FENCE**

**Proudly  
Supports  
Powerhouse  
Theatre  
Collaborative**

**Residential Fencing Specialists**  
*FULLY INSURED*



**SINCE 2005**

[www.LRFence.com](http://www.LRFence.com)

25 Country Club Rd  
Suite 606  
Gilford, NH 03249

**Call Us for a Free  
Estimate!  
603.524.6061**

## **Angelo Gentile (Willie | Sunrise Towers)** A

founding member of the Rockin Daddios doo wop quartet, he has performed with many theater groups throughout the Lakes Region area. Past roles include: Nicely-Nicely Johnson (*Guys and Dolls* (three times), John Dickinson (*1776*), Mr. Mushnik (*Little Shop of Horrors*), Ton Ton Julian (*Once on this Island*), Emile DeBecque (*South Pacific*), and Bill Austin (*Mamma Mia*). Much love and thanks to wife Jean for supporting him both on and off the stage.

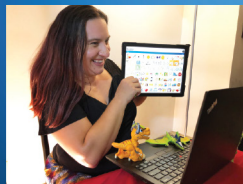
**Jim Gocha (Joe | Black Ice)** is a local actor who has worked with many community and professional companies in NH.

When not on stage, he teaches language arts in Concord. Jim can next be seen in Pinter's *Betrayal* at the Winnepesaukee Playhouse. He would like to thank Chuck for his words, Doreen for her thoughts, his fellow actors for helping to bring it all to life, and his wife for her love and patience. Enjoy the show.

**BOOTHBY**  
THERAPY SERVICES

HELPING CHILDREN SUCCEED

**NEW HAMPSHIRE'S**  
*best provider of school-based services*



AAC | Occupational Therapy | Orientation & Mobility  
Physical Therapy | School Psychology | Speech Therapy  
Teachers of the Visually Impaired

[www.boothbytherapy.com](http://www.boothbytherapy.com)

**PROUD TO SUPPORT  
THE COLONIAL  
THEATRE'S  
INAUGURAL  
SEASON!**



FSBNH.BANK

**Katie Griffiths (Alex | *Light Speed Dating*)**

is thrilled to be a cast member in *Light Speed Dating*. She directed *In Boxes* for the April Zoom Play Festival which was her first foray into directing a play. Katie typically spends her time performing, stage managing, and producing for groups such as The Community Players of Concord, NH and working on productions at the Hatbox Theatre. She is looking forward to new opportunities and adventures with Powerhouse Theatre Collaborative!



**Thank you to ALL our sponsors!**  
**You put the POWER**  
**in Powerhouse!**



***WELCOME!***  
**POWERHOUSE**  
**THEATRE COLLABORATIVE**  
**TO OUR COMMUNITY**



***We look forward to sharing  
our love of the arts with you.***

Contact us for assistance in evaluating the value of your property.  
We are equipped to help you make an informed decision about the future of  
your real estate utilizing our many years of experience.

**604 Main St.  
Laconia**

***In the heart of downtown  
(603) 527-8200***

**208 Daniel Webster Hwy  
Meredith**

***At the junction of Rts. 3 & 104  
(603) 279-0079***



**Forest Hamel (Ruben | *A Box of Chocolates*)** is an 8th grade student at Inter-Lakes Middle High School in Meredith. He has enjoyed participating in theater throughout the Lakes Region for the past five years. Some of his favorite roles include Mowgli (*The Jungle Book*) and Hot Blades Harry (*Urinetown*) at the Winnepesaukee Playhouse and Edgar (*Ragtime*) at InterLakes Summer Theater. Forest is a dance student at The Studio at Meredith Bay, and this fall he will pursue his passion for theater as a high school freshman at Walnut Hill School for the Arts in Natick, MA.

## **Colonial Theatre Architects!**

**Tickets now on sale for our first Colonial show,  
*The Dinner Party.***



# **Celebrating our Community through the Restoration of a Cultural Icon**

**Proud Supporter of the  
Cultural Arts of Laconia**

**M**  
Miaszek  
Turpin  
p l l c  
Architecture  
Planning

Laconia, New Hampshire  
603.527.1617  
miaszekturpin.com

residential + commercial design | historic preservation

Colonial Theatre - Laconia, NH | Karen Bobotas Photography



**WESCOTT LAW** P.A. EST. 1927  
Sound Counsel. Practical Solutions.

- Estate Planning & Probate
- Business Law
- Commercial & Residential Real Estate
- Family Law
- Landlord/Tenant Law
- Personal Injury
- Criminal Defense
- Planning & Zoning
- Litigation



28 Bowman St., Laconia, NH

Satellite offices in  
Plymouth, Meredith &  
Portsmouth

**(603) 524-2166**

[info@WescottLawNH.com](mailto:info@WescottLawNH.com)  
[WescottLawNH.com](http://WescottLawNH.com)

**Kathleen Hill**  
(**Director | *Light Speed Dating***) is a retired school administrator. In her spare time (during non-COVID times) she can be found directing the Inter-Lakes Middle/High School Theater Company. She can also be seen on stage at the Village Players in Wolfeboro and at the Winni Playhouse. Thanks Bryan and Johanna!

**Tess Hodges**  
(**Playwright | *The Save Button, Libby | Light Speed Dating***) wrote a play. A play about friendship, directed by a friend. And she is performing in a play written by a different friend, where she has to try to flirt with her other friend/roommate, while maintaining a straight face. Weird.

**Alyssa Johnson (Gem | *Black Ice*)** is thrilled to be participating in this festival after having performed in more than 30 plays and musicals in community and educational settings. She recently graduated from Allegheny College in PA with a double major in theatre and psychology. Favorite previous shows include *Urinetown*, *Romeo and Juliet*, *Luna Gale* (at Allegheny's Playshop Theatre), *Legally Blonde*, and *Godspell* (both at the Majestic Theatre).

**Anna Jortikka (Lex | *The Save Button*)** is delighted to be performing in the Powerhouse Theater Collaborative's Park Play production. She is a Biotech Patent Analyst from Alton, New

Hampshire. She is also a member of The Village Players in Wolfeboro, NH. She loves to sing, act, and go on outdoor adventures. Previous shows include: *Once Upon a Mattress*, *You're a Good Man, Charlie Brown*, *Seussical the Musical*, *Godspell*, and *The Music Man*.



**CHISHOLM PERSSON  
&  
BALL, PC**

**Estate Planning &  
Probate Administration  
Family Law  
Civil Litigation  
Business Law  
Personal Injury  
Real Estate &  
Commercial Transactions**

**CONTACT US**

**[WWW.LACONIALAW.COM](http://WWW.LACONIALAW.COM)**

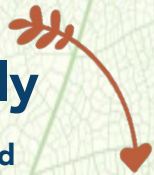
**755 N. Main St., Laconia, NH 03246 603.528.2900**

**Emily Judkins (Sam | *Guilty as Charged*, Jaime | *Light Speed Dating*)** Emily began doing community theater as a wee lass of 6. She grew up on the stage doing everything from *Sweeney Todd* to *How to Eat Like A Child*. After dabbling with some Shakespeare in high school she took a few years off to be an adult. She is very happy that after gaining a loving family she returned to theater in the Lakes Region. This is her first production with Powerhouse.

**John Masse (Evan | *Light Speed Dating*)** is thrilled to be working on such an ambitious project! He has been active in community theatre for over a decade, and has no intention of slowing down anytime soon! Favorite roles include Seymour (*Little Shop of Horrors*), Chip (*25th Annual Putnam County Spelling Bee*), and George Bailey (*It's A Wonderful Life*). He can typically be found working with Franklin Footlight Theatre, where he is currently serving his fourth term as President.

## **Powerhouse Theatre Collaborative Thanks its family**

**sponsors!** Visit our [Get Involved Page](#) to find out how you can become a sponsor, audition, volunteer, and more!



the Belknap Mill presents



## SAVE THE DATES:

MAY 21 | ACOUSTIC TRIO

JUNE 4 | CATFISH HOWL

JUNE 18 | TALL GRANITE BIG BAND

JULY 2 | 80'S DANCE PARTY

WITH FRANK FM

JULY 16 | APRIL CUSHMAN

JULY 30 | GREEN HERON

AUGUST 13 | DWAYNE HAGGINS

AUGUST 27 | REBEL COLLECTIVE

SEPT 10 | SOCK HOP

WITH ROCKIN' DADDIOS

## CONCERT SERIES

Free and Open to the Public  
Shows Begin 6pm

**Nora McBurnett (Playwright | *Light Speed Dating*, *Rita* | *Guilty as Charged*)** is thrilled to see her first short play come to life! This Playwriting Festival has been such a fun and creative way to get back into theatre. Nora has worked on many shows with CPC (most recently *Sweet Charity* and *Annie*) and is currently a board member. Nora runs her own business, Solare Wedding Photography, and can't wait to get back to time with friends, adventures with her wife, and indoor theatrical activities soon.

*Now on center stage...*

## XC40 Recharge Pure Electric

**Unplug and play.** Discover our first pure electric compact SUV.



**4.7<sup>sec</sup>**  
0-60mph

**208<sup>mi</sup>**  
\*EPA-based estimated distance  
on a fully-charged battery

**40<sup>min</sup>**  
~80% charged

**402<sup>hp</sup>**  
Pure power



**LOVERING**  
VOLVO CARS MEREDITH

The Only Premium Automotive Dealership for  
Sales & Service North of Concord!

lovingmeredith.com | (603) 279-8000  
251 Daniel Webster Highway  
Meredith, NH 03253

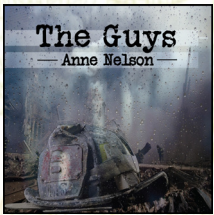
\*This is an electric vehicle. Since electricity is not measured in gallons, a conversion factor is used to translate the fuel economy into miles per gallon of gasoline equivalent (MPGe). EPA-estimated 85 city/72 highway/ 79 combined MPGe. Use for comparison purposes only. Your MPGe will vary for many reasons, including but not limited to, driving conditions, how and where you drive, how you maintain your vehicle battery-package/condition, and other factors. For more information, including information on MPGe, see [www.fueleconomy.gov](http://www.fueleconomy.gov)


# LOVERING | Meredith

**Cars you love from people you trust.**

**David Nelson (Bob | *Guilty as Charged*)** An avid actor in his youth, David has returned to theatre after settling down in the Lakes Region and has been active on and off stage for the last 6 years. Some of his favorite roles he's portrayed are Mr. Parker (*A Christmas Story*), and Donkey (*Shrek*), earning him the nickname, Donkey Dave. David is delighted to be a part of Powerhouse's debut shows!

This September the **MILL**  **SERIES** continues



 A reading at the Belknap Mill of this impactful play to commemorate the 20th anniversary of 9/11.

the  
**WINNIPESAUKEE**  
playhouse



**AWARD-WINNING LIVE THEATRE**  
**WWW.WINNIPESAUKEEPLAYHOUSE.ORG**  
**(603) 279-0333**

## **Dorothy Piquado (Director | *A Box of***

***Chocolates*)** Most of Dorothy's "directing career" has been as a middle school language arts teacher. Since retirement she has had many opportunities to be on stage and to be directed by and learn from those with far more experience. These delightful original plays and the fine actors who are performing in them make this job of directing both enjoyable and easy. Thank you Bryan for this opportunity

## **John Piquado (Director | *A Mother's Legacy*)**

Since retiring from his career as a high school teacher in international schools, John found his second act on stage in about 60 productions. Having taught writing skills and an appreciation for literature and the arts, he understands the effort required to create these charming original plays and is impressed by their quality. The opportunity to direct two outstanding local actors in one of them is truly rewarding. Thank you to the Powerhouse and the Belknap Mill, and all involved in this playwriting festival. Enjoy the show.



Event Design and Audience Experience  
consulting, Stage Lighting Design, Scenic  
Design and Decor, Sound Design and Audio

Reinforcement Film/Video Production and  
Creative Direction  
Complete Turn-Key Event Production



**Rhonda Perry (Sarah | A Parent)** has appeared in several local theatre productions. You may have seen her in *Mary Poppins* (The Streetcar Company), *Sister Act* (Franklin Footlight Theatre), and *Love, Loss and What I Wore* (Hatbox Theatre). A native of Laconia, Rhonda is honored to be involved in this Powerhouse Theatre Collaborative production.

**Jim Rogato (Director | A Parent, Barney | Sunrise Towers)** performs as a musician and actor throughout New England and is expanding his love of theatre by directing a new play and acting in another. Thank you to his wife Judi for pushing him into auditioning so many years ago and introducing him to the world of theatre. Thank you to Powerhouse for the opportunity to experience another aspect of the creative process.

**Nancy Rosen (Margaret | Sunrise Towers)** is delighted to be working on her first Powerhouse project, but with two old theater buddies. In recent years, she has been lucky to perform in a few community theater productions. Favorites include *The Tale of the Allergist's Wife* (Community Players of Concord), *The Man Who Came To Dinner* (Majestic Theater), *Our Town* (Manchester Community Theater Players), *The Odd Couple-- Female Version* (Community Players of Concord). Thank you, J and Joe and to Bryan and Johanna for making theater happen for so many of us who have been itching to perform for the past year.

## **Patte Sarausky (Rose | A Mother's Legacy)**

is excited to be participating in the festival and doing live theater again! She has been involved in community theatre for over 35 years. Favorite roles include; Miss Hannigan (*Annie*), Fairy Godmother (*Cinderella*), and Joice Heth (*Barnum*). This is her first time working with Powerhouse Theatre Collaborative, but has worked with Winnepesaukee Playhouse, Streetcar Company, and Community Players of Concord in recent years. Kudos to Doris for her wonderful words that illustrate difficult mother/daughter conversations that many of us can relate to.



**Powerhouse Theatre Collaborative is a program of the Belknap Mill. Check out all the other amazing programs in arts, history and education. [BelknapMill.org](http://BelknapMill.org)**



**Melcher & Prescott**  
**INSURANCE**

KNOWLEDGE. TRUST. CONFIDENCE.

Since 1862 Melcher & Prescott Insurance has been a proud sponsor of the arts and culture in our community.

Our local professional staff are here to assist you with all your insurance needs including homeowners, automobile, watercraft, business and employee benefits.

*We work closely with our clients to secure the proper coverage at the best price!*

[www.melcher-prescott.com](http://www.melcher-prescott.com) | [insure@melcher-prescott.com](mailto:insure@melcher-prescott.com) | 605-524-4535



**Best Insurance Company**

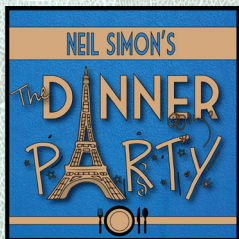


**Best Insurance Agent**

**Doreen Fotino Sheppard (Director | *Black Ice*)** has been an actor, costumer, producer, director and writer in the NH community theatre world for over 15 years. *Black Ice* is the second play written by Chuck Fray that she has had the honor to direct and the experience is as interesting and fun as ever. Kudos to this cast for bringing this show to real life.

**Paul G Smith (Mike | *Black Ice*)** has enjoyed being involved in the amazing New Hampshire theater community for the past 18 years, performing on stages throughout the state. Prior to that, he acted on stages in Mass, RI, and CT from 1968 – 1979. He is incredibly grateful to Powerhouse Theatre for pulling us all out of theater hibernation that was created by the pandemic. So great to be acting again! Thanks for watching/being here. Enjoy the shows!

**Stacy Soucy (Rita | *A Parent*)** would like to extend a huge thank you to the Powerhouse Theatre Collaborative for truly believing that the show must go on! She was last seen in *The Government Inspector* (Winnipesaukee Playhouse) trying to give away silver platters....



**Powerhouse Theatre Collaborative  
& Community Players of Concord.  
Our Next Collaboration.  
August 13-15**



# PROGRESS ON PURPOSE

SINCE 1969

CONSTRUCTION MANAGEMENT

CONSTRUCTION SERVICES

DESIGN/BUILD

GENERAL CONTRACT



*Project: The Colonial Theatre, Laconia NH*

*Owner: City of Laconia & Belknap Economic Development Council*

*Construction Manager: Bonnette, Page & Stone Corp.*

*Architect: Misiaszek Turpin, LLC.*

## Bonnette, Page & Stone Corp.

[www.bpsnh.com](http://www.bpsnh.com) (603)-524-3411

## Phoebe VanScoy-Giessler (Mira | A Parent)

is thrilled to be part of this inaugural series of shows. In addition to working with Powerhouse, she enjoys performing and producing community theater with The Village Players (Wolfeboro) and the Winnepesaukee Playhouse (Meredith). Favorite roles include Cat in the Hat (Seussical), Queen Aggravaine (Once Upon a Mattress) and Mrs. Bradley (The Best Christmas Pageant Ever). When she's not pretending to be other people, Phoebe is a Development & Communications Director at Prescott Farm, wife to Scott (who makes his own hair cut appointments), and Mom to 3 amazing bags of flour... errr... boys.



**September 10-12 & 17-19,  
Hatbox Theatre  
Concord, NH**

**No director! No rehearsals! One actor  
who never sees the script until  
it gets handed to him/her  
at the beginning  
of the show!**

## Park Festival Producers

**Bryan Halperin (Playwright, Director | *Guilty as Charged*)** is a founder of Powerhouse and a member of the Players. As the teacher of the workshop in which these plays were created, he's excited to see their development from idea to production and is happy that Powerhouse is able to give this opportunity for playwrights to see their work brought to life. He will be directing Powerhouse's first two Colonial productions - *The Dinner Party* and *Our Town* - and encourages anyone interested to audition for the latter. Thanks to all the festival participants!

## Park Festival Producers, cont.

**Johanna Halperin** (Producer) is thrilled that so many community members were itching to get back to theatre even if this experience was not what they were traditionally used to. Johanna feels theatre is a valuable tool to learn history, empathy, and about ourselves while having fun and making friends. She appreciates the creativity that the participants contributed to this project.

**Elizabeth Lent** (Director's Consultant) is a theatre educator, director and technician. She is a mainstage director for the Community Players of Concord, most recently directing *Shakespeare in Hollywood*, is an Osy Strong Award recipient and a Life Member of the Players. She currently serves as the Players' Wardrobe Mistress. Betty has received a NH governor's commendation for Excellence in Theatre Education, is a life member of the New Hampshire Educational Theatre Guild and the new Vice-President of the New England Drama Council. Throughout her career, she has directed over 100 productions in secondary and community theatre settings, and is happy to have the opportunity to work on this project with Bryan and Johanna.

OUR TOWN &  
A CHRISTMAS CAROL

A U D I T I O N S

SEE AUDITIONS PAGE



## PRODUCERS' NOTES

While it certainly isn't ideal to create a new theatre program during a pandemic, the pause has given us ample time to plan for our inaugural, abridged 2021 "live" season. In the meantime, providing this opportunity for 60 people to participate in our COVID-safe short play festivals this spring has allowed Powerhouse to start to build its theatrical family – which is what community theatre is all about. Our thanks to the Community Players of Concord and all the participants for joining our family!

***Bryan and Johanna Halperin, Producers  
Powerhouse Theatre Collaborative***

It has been our pleasure to partner with Bryan and Johanna Halperin of Powerhouse Theatre Collaborative in producing the two short play festivals. These festivals have provided dozens of local folks the opportunity to stretch their theatrical wings during this confining pandemic period, all in a COVID-safe way - no small feat! Congratulations to all the burgeoning playwrights, adventurous directors, and accomplished actors whose talents will be on display, and thank you, Bryan and Johanna, for leading the charge in this wonderful endeavor!

***Ellen Burger, President  
The Community Players  
of Concord, NH***

